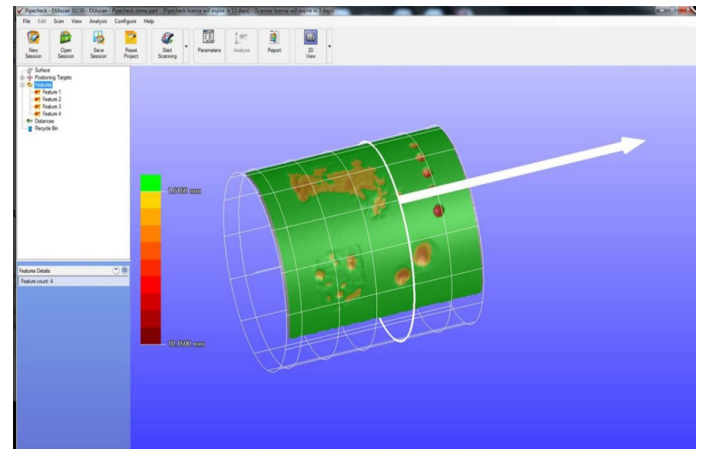
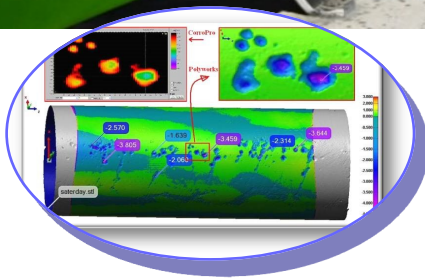
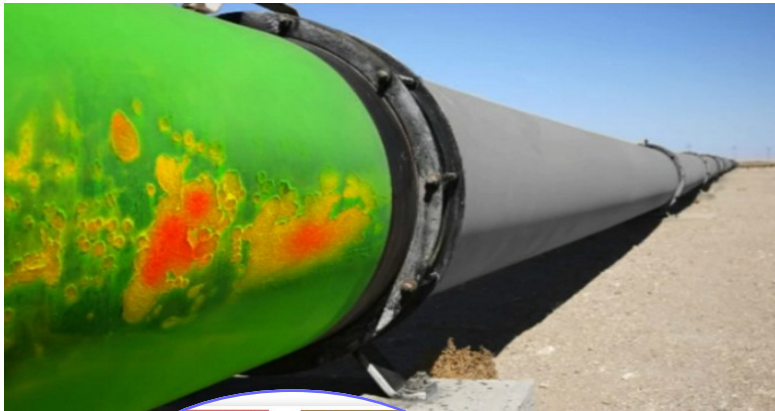


LASER SCANNING FOR EXTERNAL DAMAGE AND CORROSION ASSESSMENT

Pipeline operators must deal with increasing pressure from regulatory authorities and environmentalists to guarantee the pipeline network's integrity, while keeping maintenance costs at their lowest. Considering these factors, they need to look for portability, measurement speed, data storage, and repeatability in their choice of

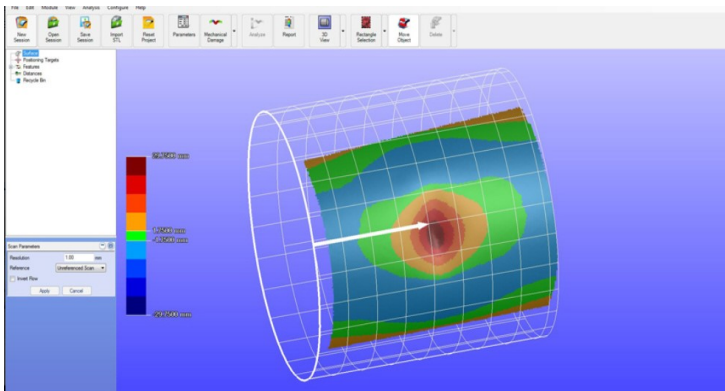
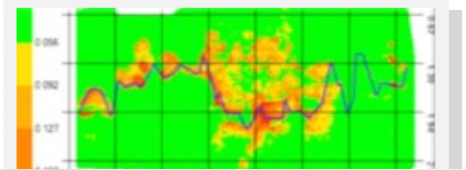
Advantages External Corrosion Pipe

- Data quality can be assessed in real time during acquisition.
- Repeatability is ensured by scanner design, pre-programmed calculation and auto-generated reports.
- Follows code regulation (ASME B31G) R-*Streng*.
- Scanning speeds more than 10 times faster than pit gauge technique.
- 3D color mapping with river-bottom path overlay.

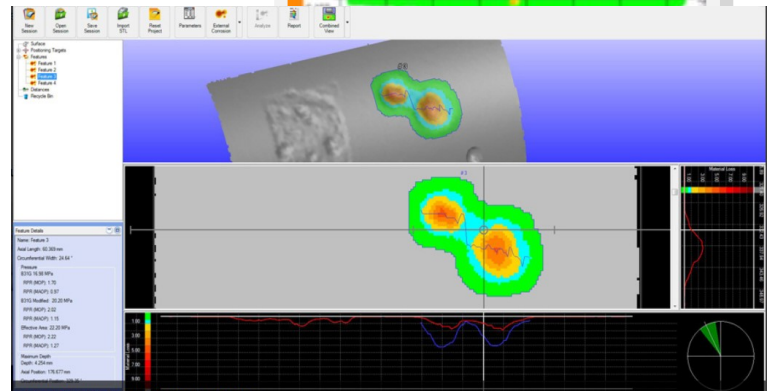


Advantages Mechanical Damage

- Data quality can be assessed in real time during acquisition.
- Repeatability is ensured by scanner design, pre-programmed calculation and auto-generated reports.
- Scanning speeds more than 10 times faster than pit gauge technique.
- 3D color mapping of damaged area.
- Visualization tool to increase dent shape understanding.



Multiple Dent Analysis



Depth over Diameter Ratio