

Computerized Radiography



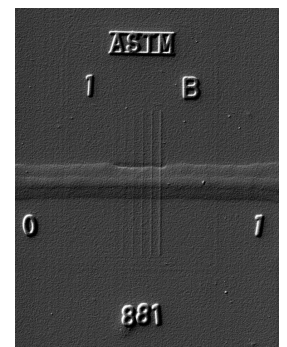
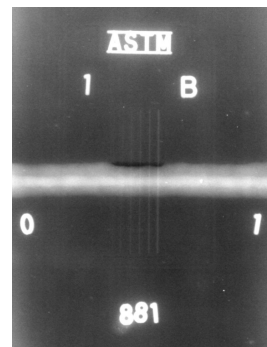
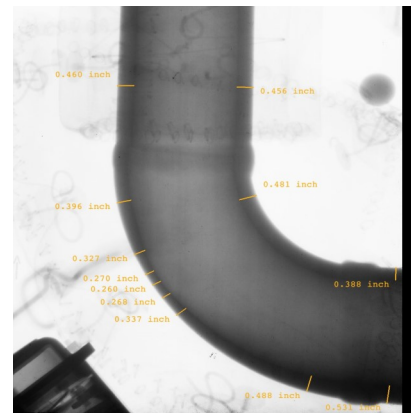
Applications:

- Weld Quality
- Profile thickness
- Confined work areas
- Remote QA required
- Indefinite history
- Alloy radiography
- Valve Assessment

Advantages:

- No Film
- Electronic Storage
- Electronic Transfer
- Environmentally safe
- Reduced exposure times
- Increased Safety
- Film Digitizing available

- Uses the same radiation sources as film, (Cobalt 60, Iridium 192, Selenium 137, X-Ray & Pulsed X-Ray Machines, etc.)
- Image is captured on a flexible, phosphor coated, re-useable imaging plate.
- Imaging plate is exposed inside of a traditional film cassette with lead screens.
- Imaging plate is then scanned by a laser scanner producing a digital image.
- Digital image can be enhanced, filtered, annotated, zoomed, shared and stored.
- Imaging plate is then erased and



X-Ray Tube Head

Original Image

Embossed Image